



Population and Climate Change Vulnerability:

Understanding Current Trends to Enhance Rights and Resilience

Presented by Kathleen Mogelgaard

Population Connection Webinar, September 14, 2023



**POPULATION
INSTITUTE**

Responding to the climate crisis: 3 categories of action

- Mitigation
- Adaptation
- Loss & Damage



Responding to the climate crisis: 3 categories of action

- Mitigation
- Adaptation
- Loss & Damage

Understanding **vulnerability** is key to adaptation action



Multiple dimensions of climate change vulnerability



- Exposure
- Sensitivity
- Adaptive capacity

Widely-used **vulnerability index** developed by the Notre Dame Global Adaptation Initiative (ND-GAIN)



POPULATION
INSTITUTE

Indicators for the 80 Most Vulnerable Countries

Country	ND-GAIN Vulnerability Rank	Population, millions (2023)	Population Growth Rate (2023)	Population Doubling Time, years	Gender Inequality Index	Adolescent Birth Rate per 1000 age 15-19	Maternal Mortality Ratio per 100K live births	Total Fertility Rate (2023)	Unmet Need for FP Married Women 15-49	% Severe Food Insecurity (2019-2021)
World		8045.3	0.9	76		41	223	2.31	11	11
USA	160	340.0	0.5	129	0.179	15	21	1.66	6	1
Niger	1	27.2	3.7	19	0.611	132	441	6.67	19	
Somalia	2	18.1	3.1	23		116	621	6.1	26	42
Chad	3	18.3	3.1	23	0.652	139	1063	6.12	24	
Guinea-Bissau	3	2.2	2.1	33	0.627	84	725	3.84	19	29
Sudan	5	48.1	2.6	27	0.553	87	270	4.32	27	17
Liberia	6	5.4	2.2	32	0.648	128	652	3.95	32	37
Mali	7	23.3	3.1	23	0.613	164	440	5.79	24	
Central African Rep.	8	5.7	2.9	24	0.672	184	835	5.83	25	62
Eritrea	9	3.8	1.8	39		76	322	3.71	28	
Dem. Rep. of the Congo	10	102.3	3.2	21	0.601	109	547	6.05	25	39
Rwanda	10	14.1	2.3	31	0.388	31	259	3.69	13	
Micronesia	12	0.5	1	72		33	74	2.74		



Key Findings: In the 80 most climate-vulnerable countries...

- The average **population growth** rate 1.8% -- double the global rate
- Various measures of **gender equity** and **reproductive health** also lag far behind global goals:
 - Gender Inequality Index: 0.521
 - Maternal mortality ratio: 25% higher than global average
 - Adolescent birth rate: 76 per 1000 girls aged 15-19 (compared to 41 globally)
 - Unmet need for family planning: double the global average

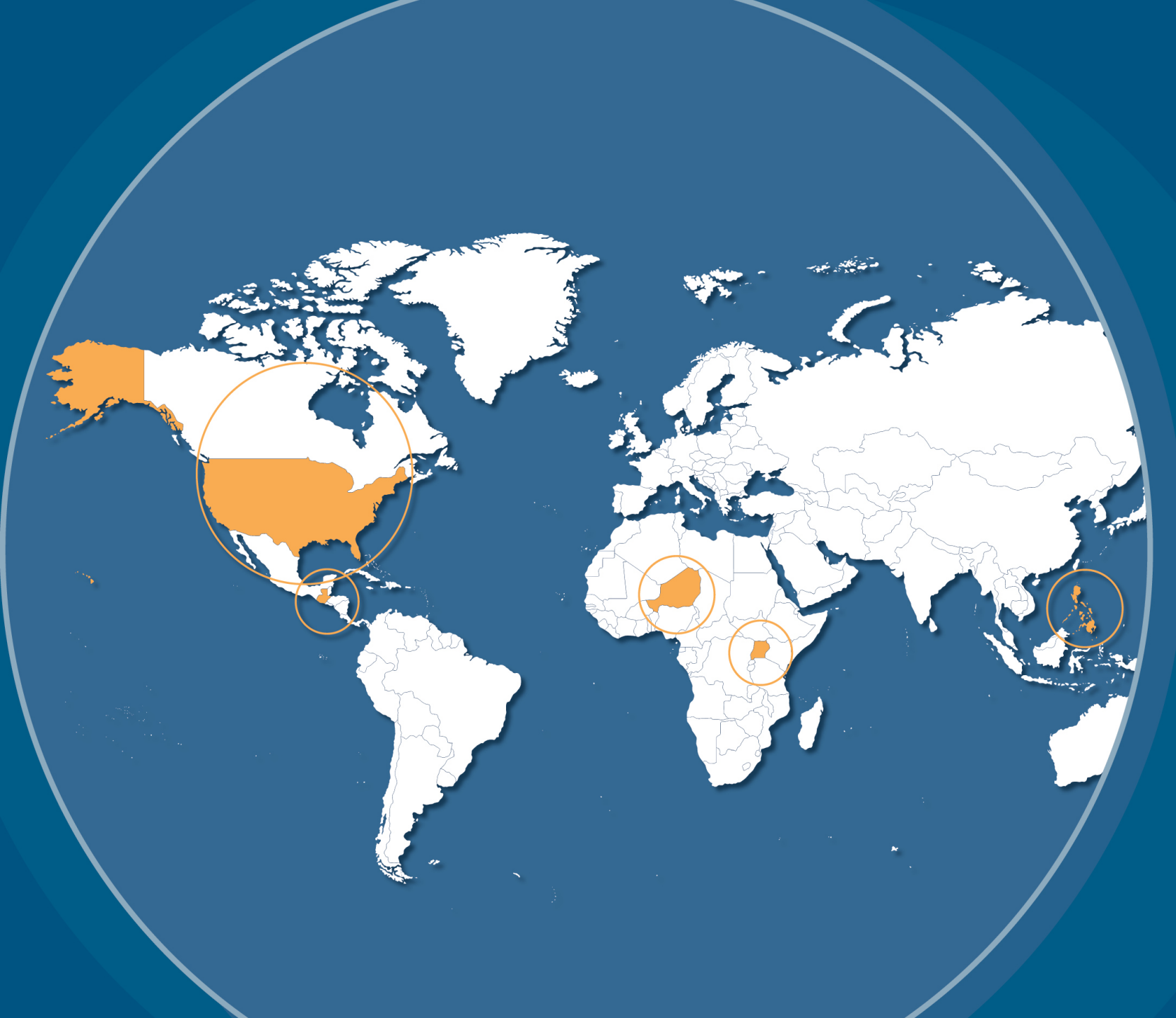


Conclusions

- Rapid population growth increases exposure, exacerbates sensitivity, and limits adaptive capacity
- Gender inequity deepens the vulnerability of women and girls, and holds back their abilities as leaders and change agents
- The good news: there are strategies to address these linked challenges



Country Profiles



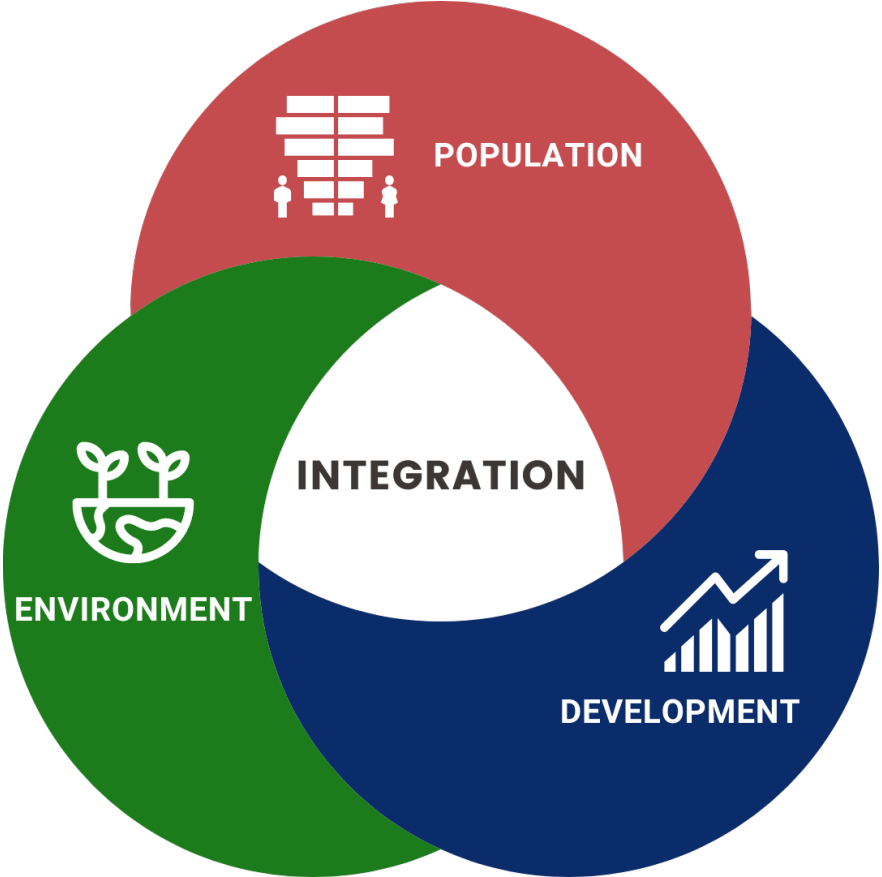
**Integrating Population Dynamics to Boost Climate Resilience:
A Discussion on Population Institute's recent report
highlighting climate change impacts in vulnerable communities**

**Best Practice of Community-Based Integrated Population,
Health, Environment and Development (PHED) Initiatives**

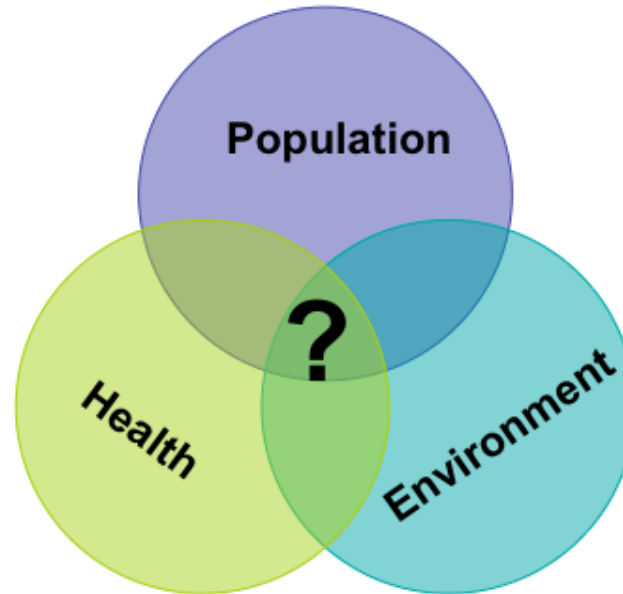
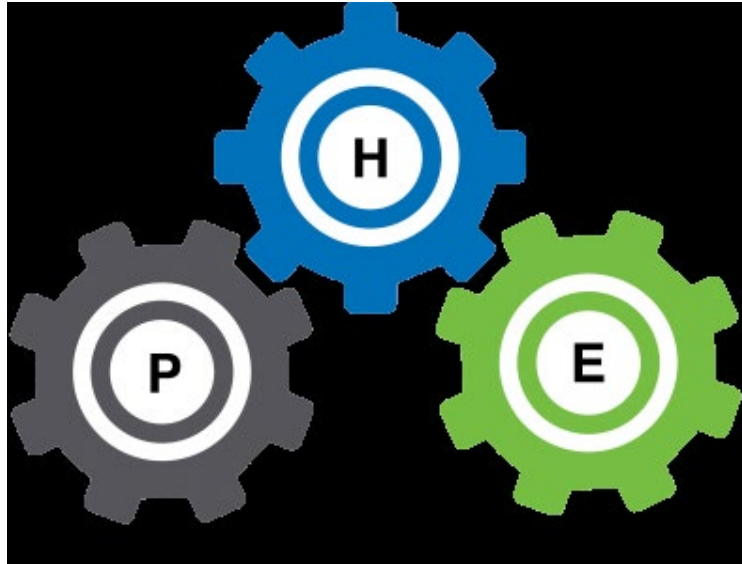


**PATH Foundation
Philippines, Inc.**

What is PHED?



What is Population, Health, Environment and Development (PHED)?



- A development approach that focuses on the interconnectedness of people, their health, their environment and development
- “Ugnayan”
- Creates synergy and value added results through simultaneous delivery of conservation, health and SRHR services with community involvement

What are the PHED Initiatives?

- First Generation (2000-2007)
 - IPOPCORM
 - PESCODEV
- Replication/Scale Up
- PHE Network
- Global Actions
- Knowledge Management – Evidence-Based

The Integrated Population and Coastal Management Initiative

- Food security was the central theme
- Model interventions and operations research
- Increased FP use; improved conservation and fishing practices; reduced illegal fishing practices; HH income up; fewer HH “lack for food”



CB-Family Planning & Reproductive Health



CB-Coastal Resource Management (CRM)



IEC & Policy Advocacy



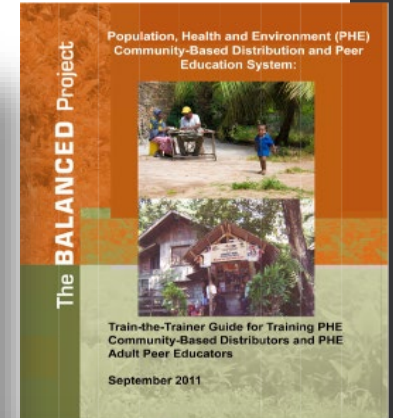
Alternative Livelihood

Building Actors & Leaders For Advancing Community Excellence in Development: BALANCED Project

Focus Areas: Africa and Asia

**Promote wider adoption and use of effective
PHE approaches globally**

- 8 countries implementing PHE approaches
- 21 organizations using PHE tools and protocols
- www.k4health.org/phe_toolkit
- Increased access to FP/RH, health,
environment services in remote communities



Youth Empower Project

- Targeted young people 15–24 year-olds to plan and implement integrated PHE approaches that promote self-help, improve quality of life, and enhance the sustainability of coastal/marine resources in high biodiversity areas



Connecting a Community's Ecosystem to Family Planning and Reproductive Health (Twin Bakhaw Project)

- Integrating family planning and reproductive health (FP/RH) interventions for long-term environmental protection, food security, and disaster mitigation
- 2 barangays in two municipalities of the Calamianes Island Group
- Women are key contributing factors to both sound environmental management and the community's health status.



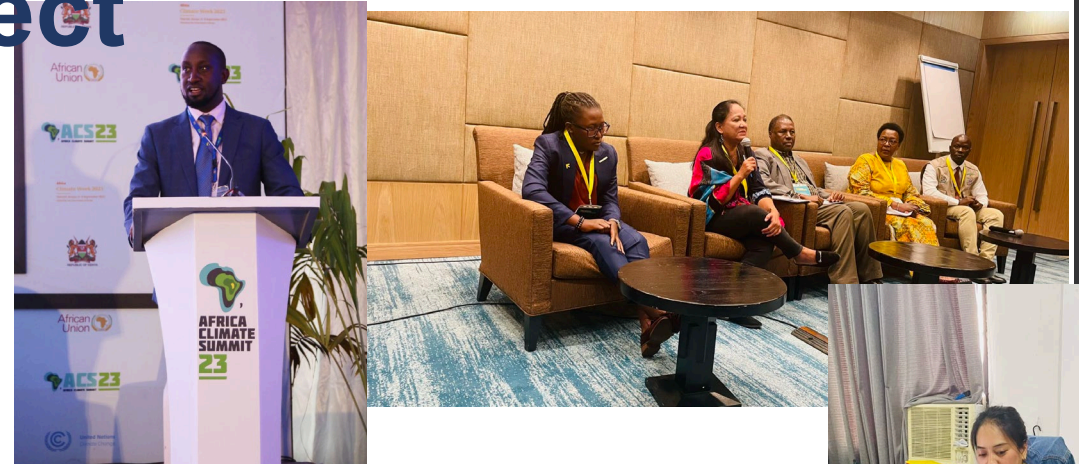
Building Capacity for Integrated FP/RH and PED Action: BUILD Project

Implemented in Four Hubs in Africa and Asia

Results:

Increased commitment for cross sectoral approaches to integrated PHE, climate change, resilience, food security, livelihoods and security programs

Strengthen individual and institutional capacity in advocacy and policy communications and negotiations

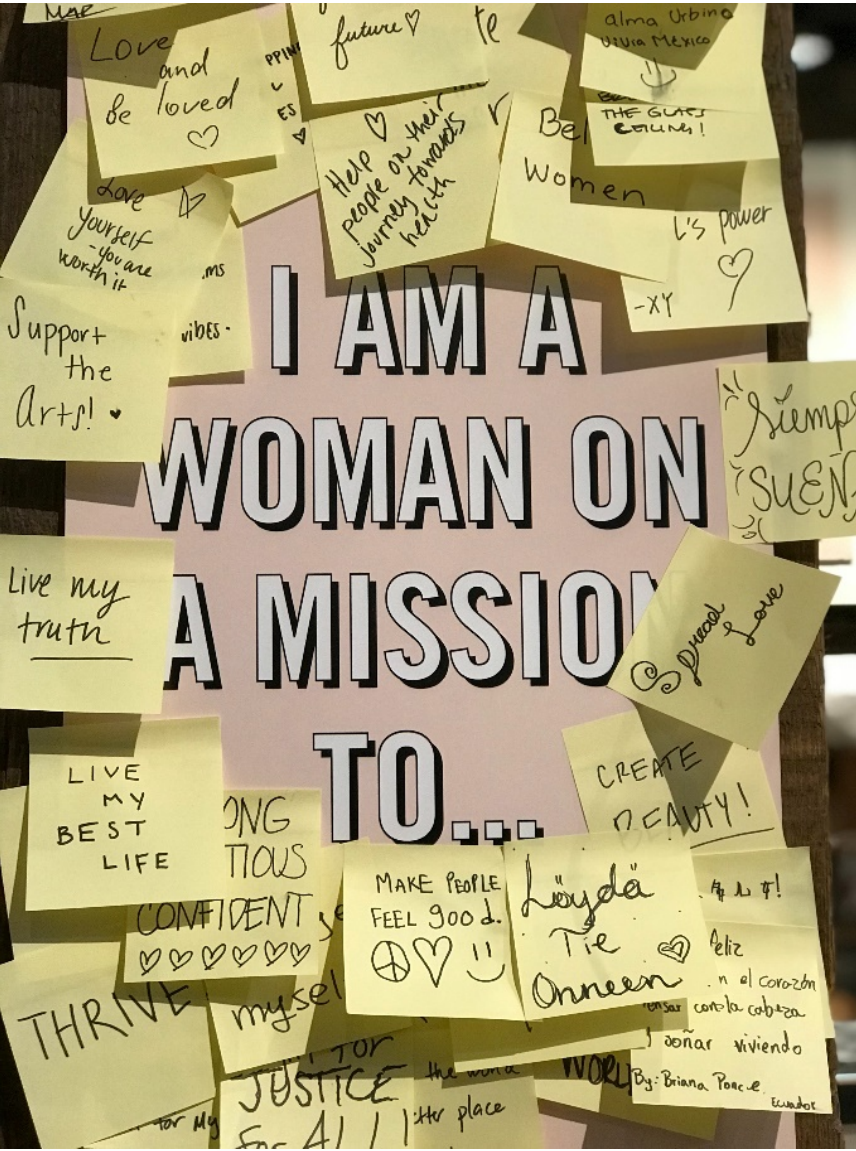


Key Points

- PHE/PED linkages are multidirectional considering population demographics and change
- PHE/PED policy solutions aims to change individual and institutional systems, structures and behaviors
 - *Enhance technical capacity, including for evidence generation and synthesis, tools, and financial resources to support cross-sectoral integrated PHE/PED approach.*
- PHE/PED related policies should be evidenced-based and build on existing models with feedback and monitoring mechanisms

Thank You





Build resilience with gender empowerment

Kelley Dennings, she/her, Center for Biological Diversity

kdenning@biologicaldiversity.org

September 14, 2023

Population Connection Webinar

Photo: Upsplash/Valentina Conde





- ▶ Carnivore Conservation
- ▶ Climate Law Institute
- ▶ Endangered Species
- ▶ Energy Justice
- ▶ Environmental Health
- ▶ International
- ▶ Oceans
- ▶ Population & Sustainability
- ▶ Public Lands
- ▶ Urban Wildlands

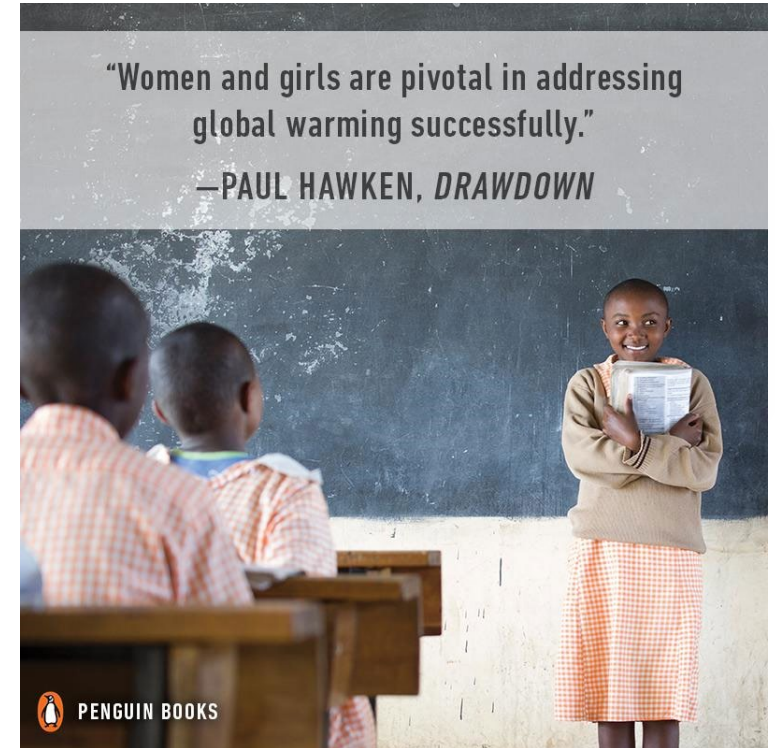


Solutions

Gigatons CO2 Equivalent Reduced (2020-2050)

◆ SOLUTION	▼ SCENARIO 1*
Reduced Food Waste	87.45
<u>Health and Education</u>	85.42
Plant-Rich Diets	65.01
Refrigerant Management	57.75
Tropical Forest Restoration	54.45

- ▶ Educating girls
- ▶ Family Planning



Source: Project Drawdown,
<https://www.drawdown.org/sectors/health-and-education>

Oppressions affect climate change

Capitalism - - Racial Inequality - - Gender Inequality

Increased Human Population



- Endless consumption
- Worsening greenhouse gas emissions

Increased Harm to Communities

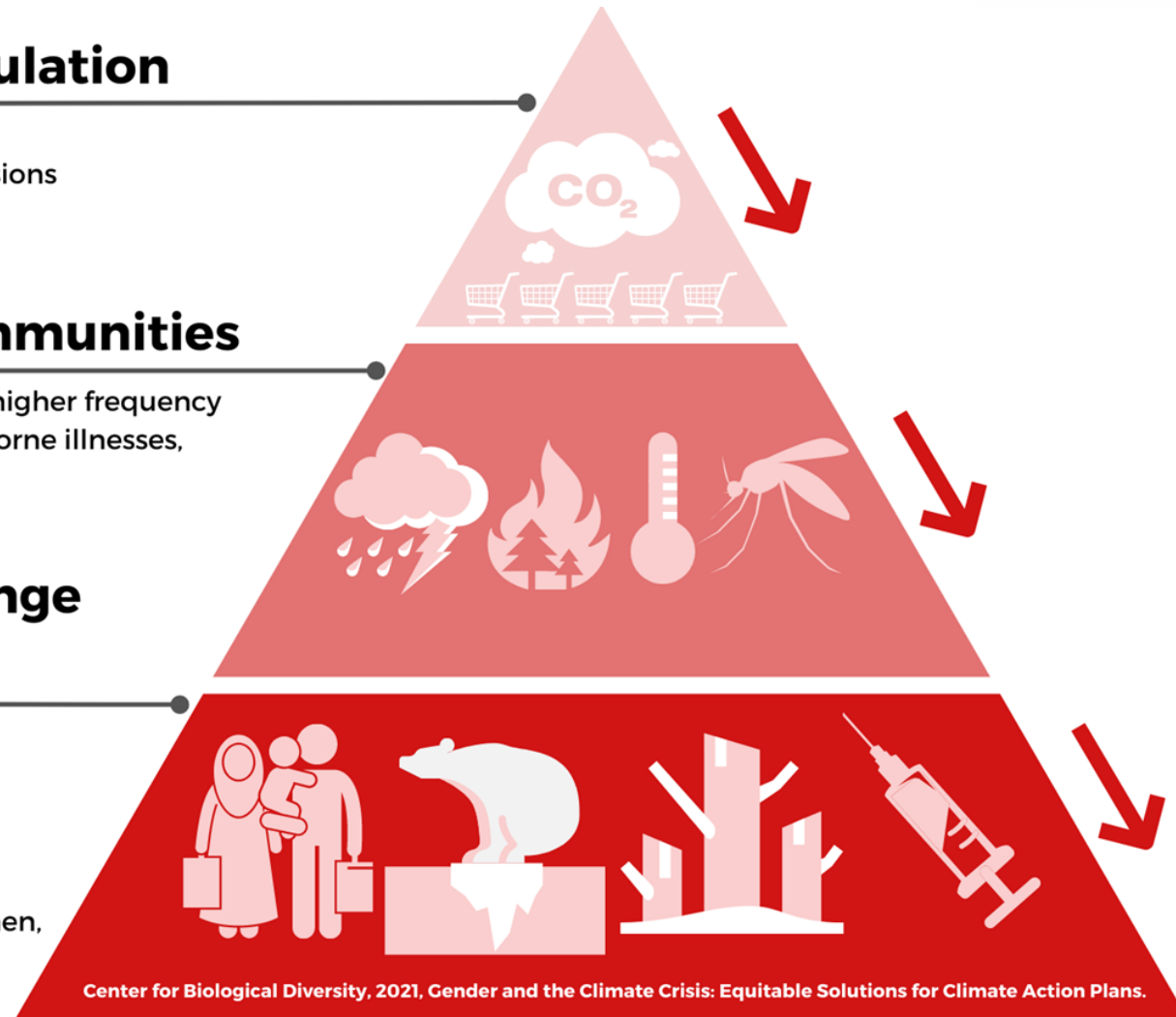


- Stronger storms, more wildfires, higher frequency of natural disasters, new vector borne illnesses, rising sea levels

Increased Climate Change Consequences



- Pressure to migrate
- Worsening food insecurity
- Exacerbated health disparities
- Exponential loss of nature and biodiversity
- Disproportionate impact on women, gender diverse and Black, Indigenous and people of color



Interconnected through Justice

Humankind has not woven the web of life. We are but one thread within it. Whatever we do to the web, we do to ourselves. **All things are bound together. All things connect.**

- **Chief Seattle**

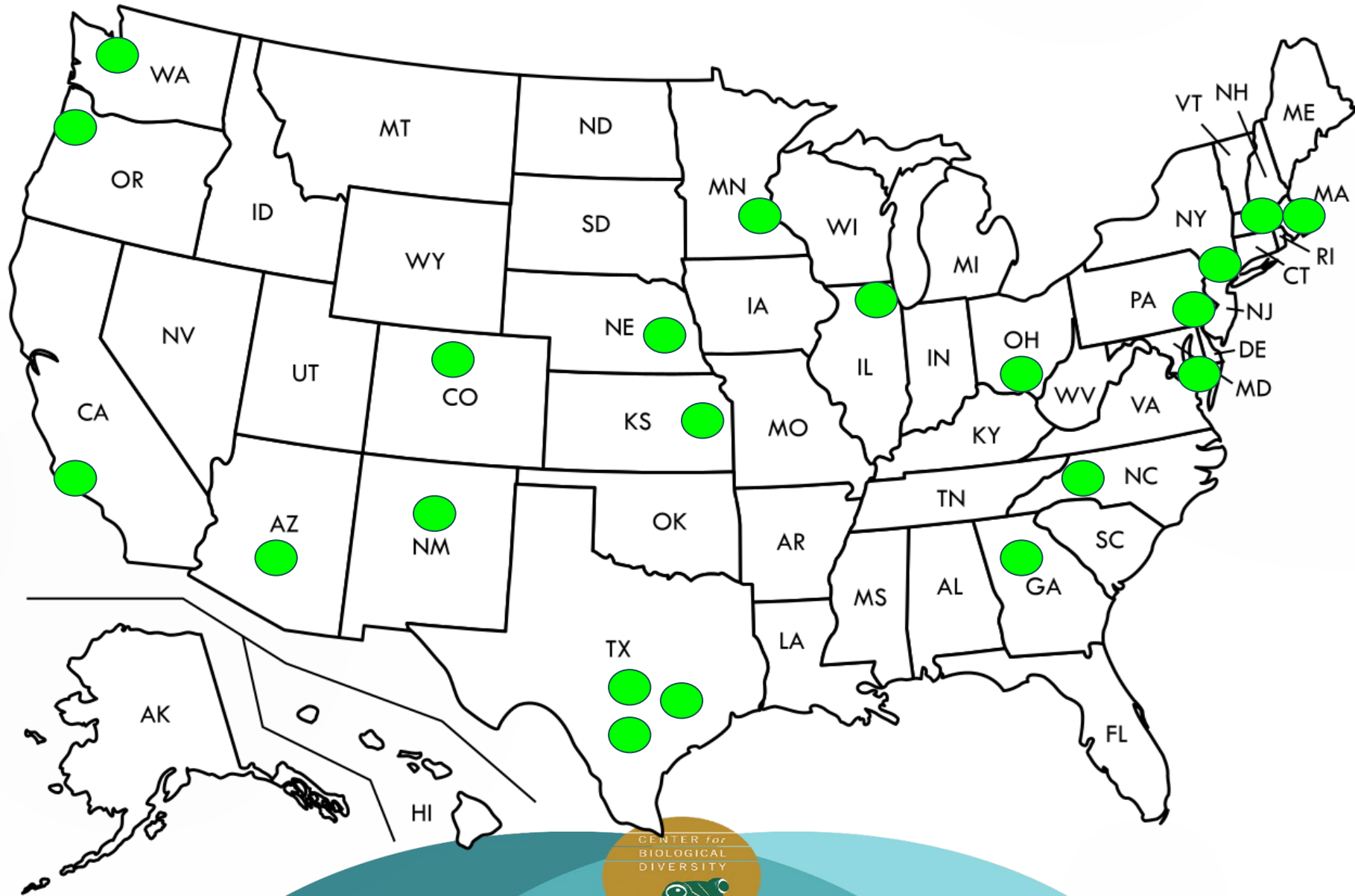
Whatever affects one directly, affects all indirectly.

I can never be what I ought to be until you are what you ought to be. This is the interrelated structure of reality.

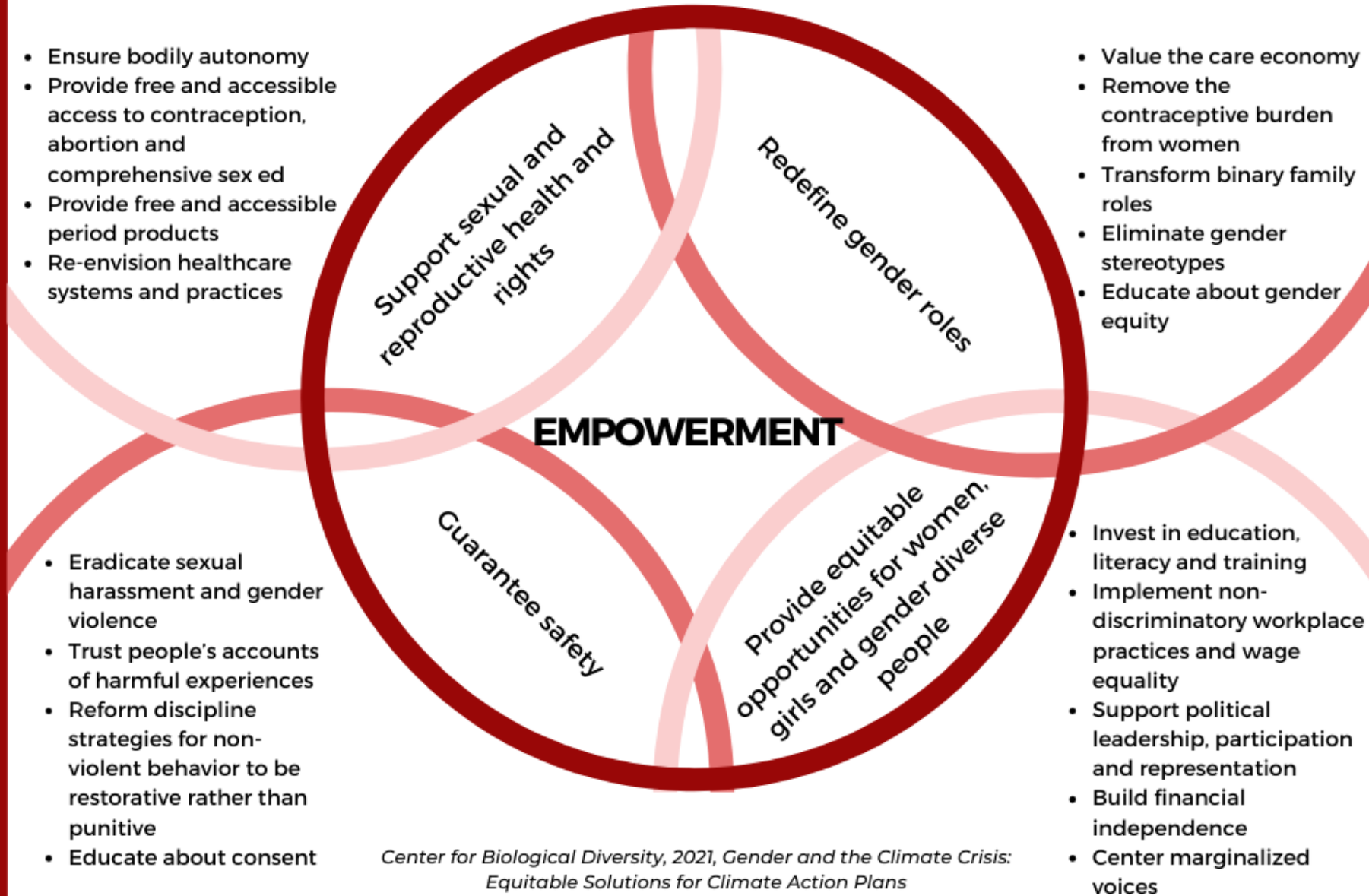
- **Martin Luther King, Jr.**



Plans Reviewed



Increasing Empowerment Through Cultural, Political and Economic Systems



Findings

Consumption	19 of 21 plans
Education	18 of 21 plans
Family Planning/ Contraception/ Reproductive Health	0 of 21 plans
Gender	1 of 21 plans
Human population/Population Growth/ Growth	15 of 21 plans
Public Health/Pollutants	20 of 21 plans
Vulnerable Populations	15 of 21 plans



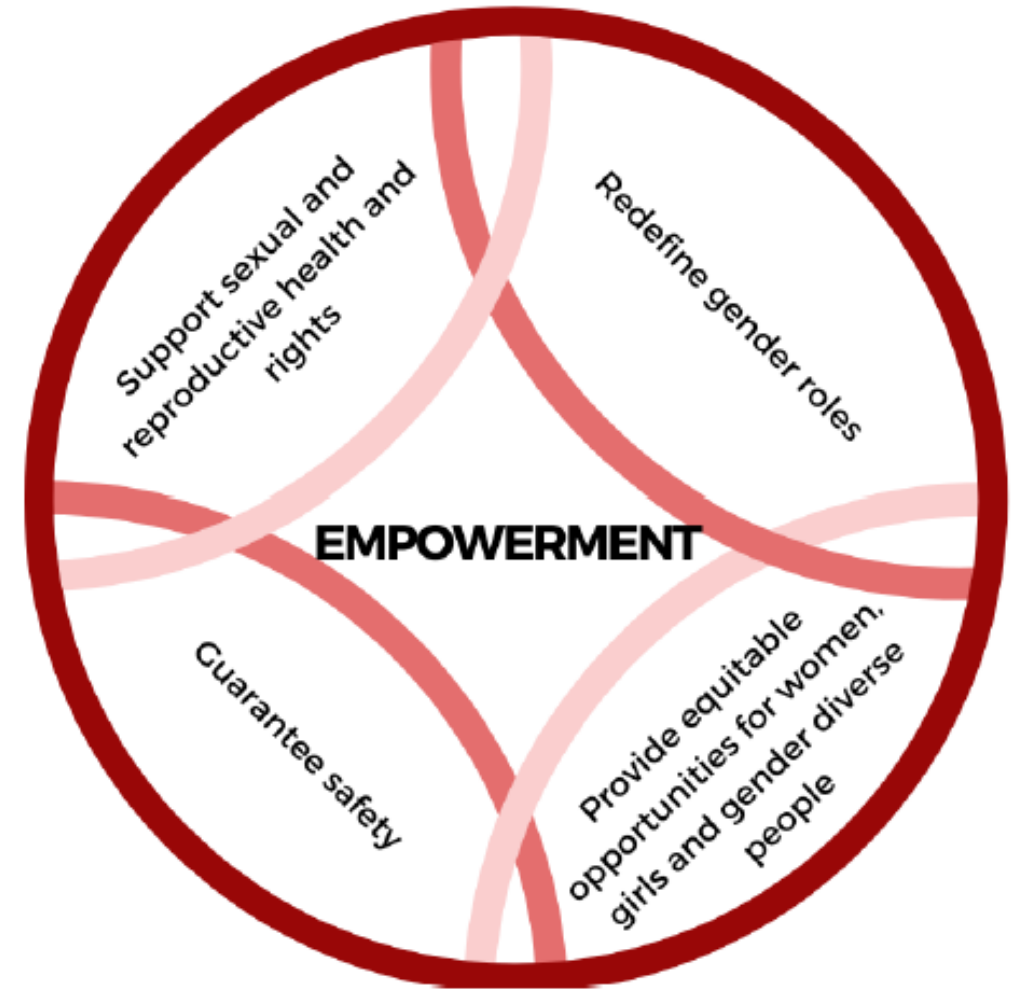
Recommendations

1. Work within existing climate plan structures to address gender inequality as a public health issue.
2. Collect relevant data related to gender, race and climate change.
3. Educate and train government staff on gender, inclusion and the climate crisis.
4. Create gender advisory committees.



Recommendations

5. Offer comprehensive sex ed, Support contraception and abortion access, Provide period products, Fund quality education, Address racial inequality in schools



Thank you

<https://bit.ly/Gender-Climate>

Kelley Dennings
kdennings@biologicaldiversity.org

Population & Sustainability Program Center for
Biological Diversity

www.biologicaldiversity.org

